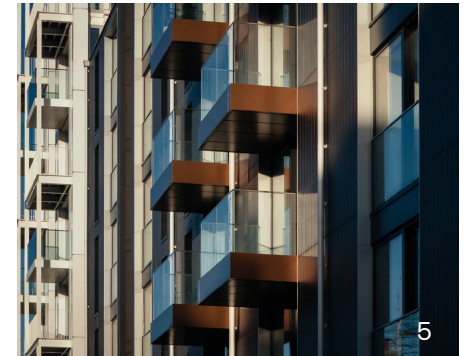
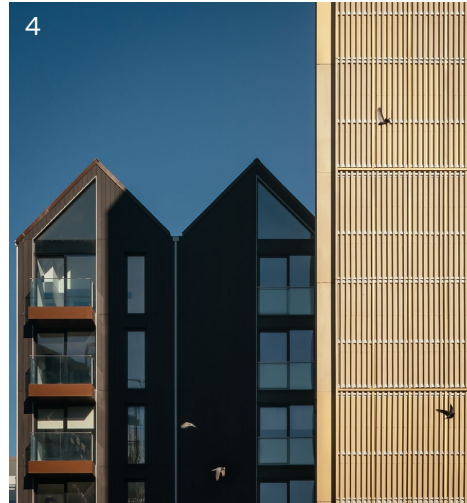
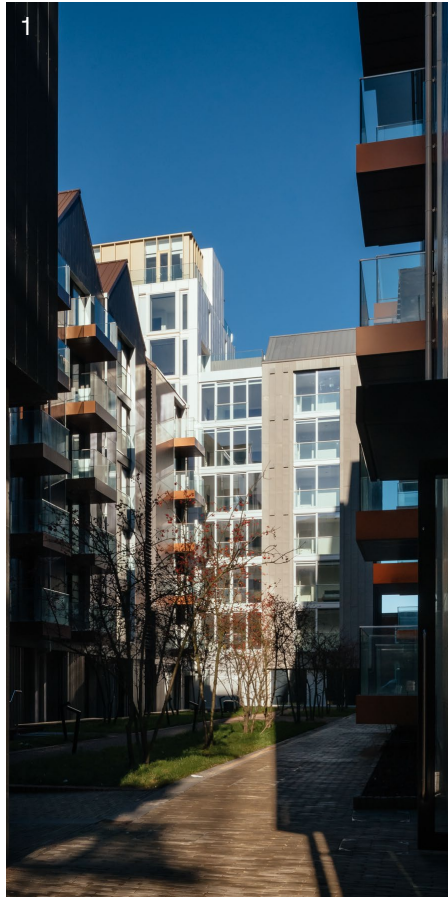


**We've spent the last decade planning and reviving the site of an old fruit and veg market into a new, creative neighbourhood right in the heart of Brighton.**

**As construction nears completion in 2021, we need your help to curate the perfect mix of thoughtful brands and experiences to complement the diverse mix of uses in our new place.**

**Welcome to Circus Street.**

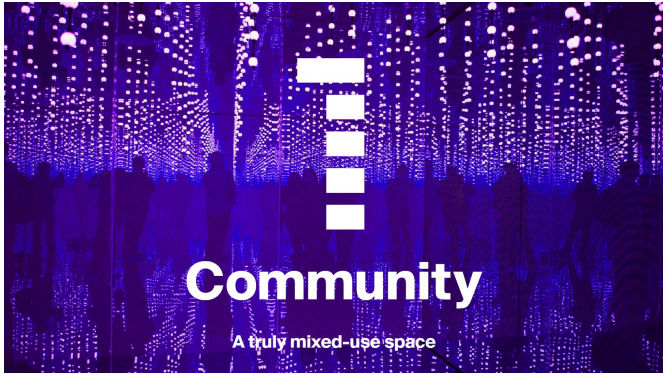




- 1 – Residential Courtyard
- 2 – Planting in front of Student Building
- 3 – View from Residential Building
- 4 – Apartments & Student Building
- 5 – Residential Balconies
- 6 – View from North Road



Circus Street



**1**

## Community

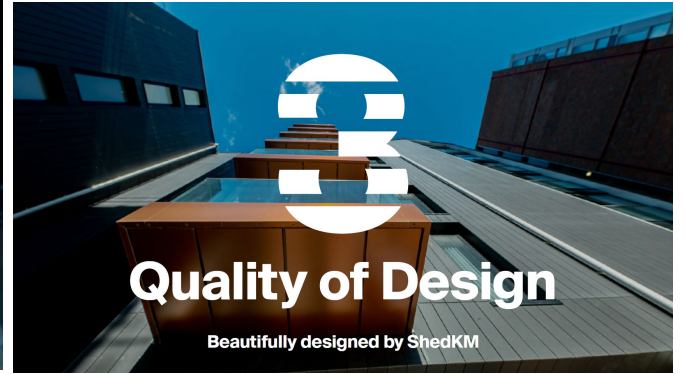
A truly mixed-use space



**2**

## Scale-Up Space

30k sq ft of office space



**3**

## Quality of Design

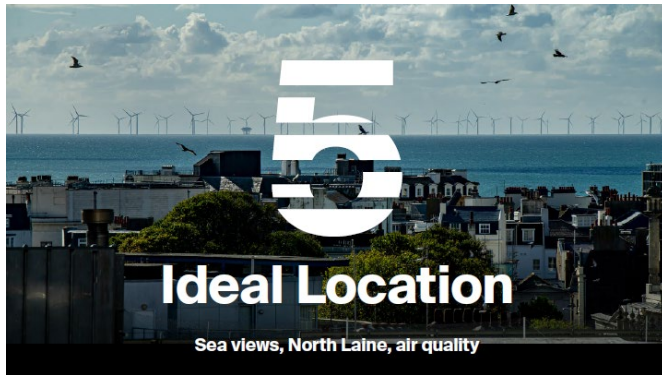
Beautifully designed by ShedKM



**4**

## Green Spaces

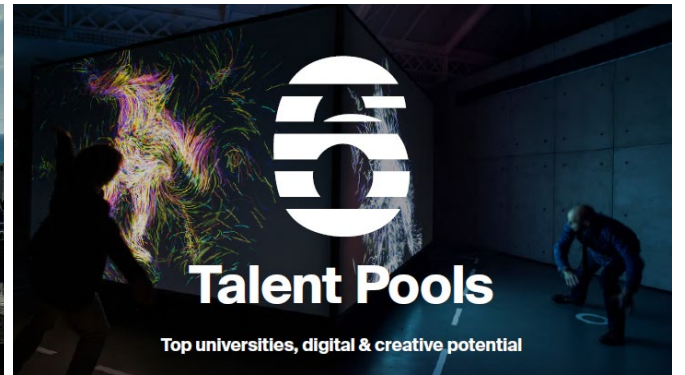
Thoughtful landscaping with over 10,000 plants



**5**

## Ideal Location

Sea views, North Laine, air quality



**6**

## Talent Pools

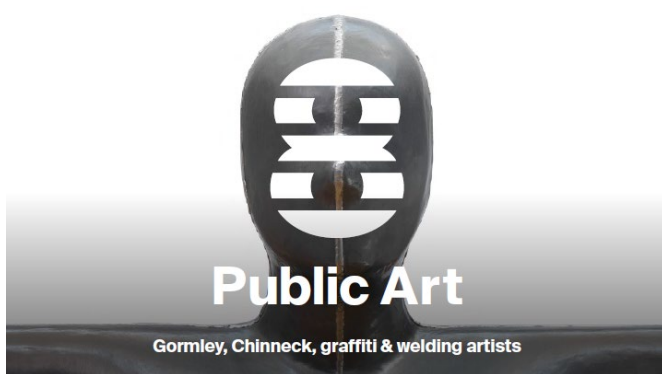
Top universities, digital & creative potential



**7**

## Sustainability

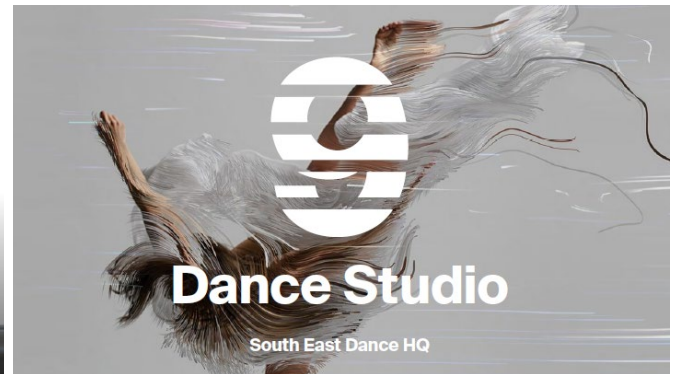
Wellness credentials & low-impact materials



**8**

## Public Art

Gormley, Chinneck, graffiti & welding artists



**9**

## Dance Studio

South East Dance HQ